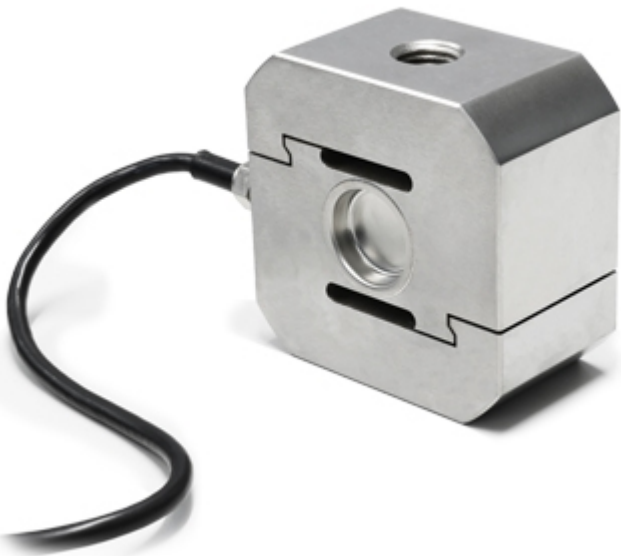


## STU-1K

"STU-1K": Tension load cells for the suspended loads weighing



Tension/Compression load cells, suitable for weighing in tension suspended loads and as overload checking and limitation, or for compression use in the creation of weighing systems with various load cells.

---

**CAPACITIES (kg):** 2000, 5000, 8000, 10000.

---

**OIML R60. C3** precision class.

---

**Stainless steel. IP68** protection.

---

The best solution  
for advanced industrial  
applications

## MAIN FEATURES

- C3 PRECISION CLASS
- STAINLESS STEEL CONSTRUCTION
- IP68 PROTECTION LEVEL
- MAX. CAPACITIES FROM 2000 TO 10000 kg
- 3m SHIELDED CONNECTION CABLE

## TECHNICAL FEATURES

- nLC: 4000
- Y: 12000(compression,  $Y=E_{max}/V_{min}$ )
- Y: 9500(tension,  $Y=E_{max}/V_{min}$ )
- Cn: 2,4 mV/V
- Input: 1000 +/- 20 Ohm
- Output: 1000 +/- 5 Ohm
- Excitation: 1...10Vdc
- Safe Overload: 120%

## DETAIL 1



## VERSIONS

### Available versions

Codice		Max (kg)
STU2000-1KD		2000
STU5000-1KD		5000
STU8000-1K		8000
STU10000-1KD		10000



“YOUR WORLDWIDE PARTNER FOR WEIGHING,”

DINI ARGEO  
FRANCE sarl  
France

DINI ARGEO  
GMBH  
Germany

DINI ARGEO  
UK Ltd  
United Kingdom

DINI ARGEO WEIGHING  
INSTRUMENTS Ltd  
China

DINI ARGEO  
OCEANIA  
Australia



**COMPANY HEADQUARTERS**

Via Della Fisica, 20  
41042 Spezzano di Fiorano Modena • Italy  
Tel. +39.0536 843418

**SERVICE ASSISTANCE**

Via Dell'Elettronica, 15  
41042 Spezzano di Fiorano Modena • Italy  
Tel. +39.0536 921784



SALES AND TECHNICAL ASSISTANCE SERVICE