



**19i** is probably the most powerful weighing indicator of similar price level. 10,000e OIML Class III approval certificate proves further that it is one of the world's most accurate class III weighing instruments.

Dual weighing range and interval, plus many other approved functions make **19i** the perfect answer for many legal for trade and non-trade applications.



Extremely low (0,75µV) input per verification scale interval means **19i** is also good for high dead load and at the same time low load cell utilization applications.

**19i** is designed and programmed to provide fast, easy and straightforward operation to meet an extraordinary wide range of applications like general static & dynamic industrial weighing, piece counting, shipping control, truck & tank weighing, pre-packing, manual sorting & packing, filling & dispensing, scientific & peak measuring & monitoring... etc. no matter as a standalone unit or incorporated in an integrated weighing system.

Thanks to the built-in high speed micro-processor, unsurpassed innovative program, new linearity compensation method, wide range of flexible, selectable operation parameters and selectable AD conversion speed, **19i** always deliver unexceptional fast, accurate and stable results from low to high resolution, simple to complicated applications even at extremely heavy workload.

Reliability and durability are safeguarded and guaranteed by the carefully selected components from renowned manufacturers as well as smart designed and well planned circuits.

**19i** always deliver more than it is expected and the #1 choice whenever & wherever performance, reliability, durability and flexibility are of no compromise.



*Adjustable Tri-Color Check Result Backlight*

**Versatility, Functionality and Accuracy are always Built-in**

# 19i Multi-Function Indicator

## Functions

- Static, Dynamic & Animal Weighing, Piece Counting and Peak Hold
- Support Single Range, Dual Range and Dual Interval Operation
- Support both Tension and Compression Load / Force Direction
- Near Zero Weight Value for Dynamic Weighing to avoid False Signal Output
- Built-in Logic for Constant Fill & Dispensing and Inflow / Outflow Control
- Add-Tare-Memory (ATM) & Remove-Tare-Memory (RTM) Function
- Manual, Preset, Auto, Repetitive and Continuous Tare Operation
- Continuous Tare with Configurable Delay Time before Tare Action
- Weight and Quantity Check Mode
- Quick Access PLUs for Weight Limits, Quantity Limits and Preset Tare Values
- Direct PLUs for Customer & Product Codes
- Check Result Control for Accumulation, Data Printout & Data Output
- Keypad Lock Function

## Operation and Management Features

- OIML Class III 10000e approved
- Full Numeric Keypad
- Configurable Machine ID, Machine Group and Operator Number to Enhance Ease of Multi-Scales Applications and Management Records
- Customer & Product Code Input through Serial Scanner or Keypad
- Customer & Product Code Support Numbers, Alphabets and Symbols Characters
- Support External [Zero], [Tare] and [Print/M+] Key Input through Scanner
- Tri-Color Check Result Indication
- Configurable Keypad, Check & System Buzzer
- 2 x Independently Configurable Bi-Direction Serial Comports. Selectable TTL Output for Comport 1
- Support Inquiry, Setting and Execution Commands through PC
- All Current Operation Results Output in Data Base Format Increases Ease & Efficiency of Data Management, Processing & Analysis
- Support Ticket Printer and Label Printer (Datecs LP-50 & TSC TDP-225, TDP-247, TDP-345, TTP-225, TTP-247, TTP-345)
- Selectable Portrait / Landscape Ticket Printout Format
- 6 x 45mm Huge Size Bold Type Wide Angle LCD Numeric Digits
- Zero, Gross, Net, Weighing Range, Memory & Battery Level & Recharge Indicators
- Watchdog System to Prevent Damages caused by Load Cell Short-circuit.
- Smart Charging Circuits
- Real Time Clock

	Opr	Seq	Mode	Mac	MacGp	Date	Time	Name	Pcode	Gross	Tare	Net	Low	High	Result	Total.W	Unit				
Weighing	3333	1	0	8888	77	2016/10/6	11:17:08	VNFHRUDHFLQAUMCB	12345678901234567A	12.500	5.000	7.500	4.995	5.005	AboveLimit	7.50	kg				
Weighing	3333	2	0	8888	77	2016/10/6	11:17:14	VNFHRUDHFLQAUMCB	12345678901234567A	15.000	2.500	12.500	4.995	5.005	AboveLimit	20.00	kg				
Weighing	3333	3	0	8888	77	2016/10/6	11:17:22	VNFHRUDHFLQAUMCB	12345678901234567A	15.000	5.000	10.000	4.995	5.005	AboveLimit	30.00	kg				
Weighing	3333	4	0	8888	77	2016/10/6	11:17:29	VNFHRUDHFLQAUMCB	12345678901234567A	10.000	5.000	5.000	4.995	5.005	Accept	35.00	kg				
Weighing	3333	5	0	8888	77	2016/10/6	11:17:46	VNFHRUDHFLQAUMCB	12345678901234567A	7.500	2.500	5.000	9.995	10.005	BelowLimit	40.00	kg				
Weighing	3333	6	0	8888	77	2016/10/6	11:17:50	VNFHRUDHFLQAUMCB	12345678901234567A	5.000	2.500	2.500	9.995	10.005	BelowLimit	42.50	kg				
	Opr	Seq	Mode	Mac	MacGp	Date	Time	Name	Pcode	Gross	Tare	Net	Total.W	Unit	Count	Unit.W	Unit	Low	High	Result	Total.C
Piece Count	3333	1	1	8888	77	2016/10/6	11:18:18	VNFHRUDHFLQAUMCB	12345678901234567A	5.000	2.500	2.500	2.500	kg	19999	0.12499	g	19995	20005	Accept	19999
Piece Count	3333	2	1	8888	77	2016/10/6	11:18:25	VNFHRUDHFLQAUMCB	12345678901234567A	7.500	2.500	5.000	7.500	kg	40002	0.12499	g	19995	20005	AboveLimit	60001
Piece Count	3333	3	1	8888	77	2016/10/6	11:18:31	VNFHRUDHFLQAUMCB	12345678901234567A	7.500	5.000	2.500	10.000	kg	20003	0.12499	g	19995	20005	Accept	80004
Piece Count	3333	4	1	8888	77	2016/10/6	11:18:37	VNFHRUDHFLQAUMCB	12345678901234567A	7.500	5.000	2.500	12.500	kg	20003	0.12499	g	19995	20005	Accept	100007
Piece Count	3333	5	1	8888	77	2016/10/6	11:18:43	VNFHRUDHFLQAUMCB	12345678901234567A	5.000	2.500	2.500	15.000	kg	19999	0.12499	g	19995	20005	Accept	120006
Piece Count	3333	6	1	8888	77	2016/10/6	11:18:47	VNFHRUDHFLQAUMCB	12345678901234567A	7.500	2.500	5.000	20.000	kg	40002	0.12499	g	19995	20005	AboveLimit	160008

Database Output Content Illustration: - Weighing and Piece Count Mode

**Versatility, Functionality and Accuracy are always Built-in**

# 19i Multi-Function Indicator

## Printout Formats

```

Time 14:27:24
Date 2016-10-06
Seq 1
Name VNFHRUDHFLQAUOKMCB
Pcode 12345678901234567A
Net 5.000kg
Tare 2.500kg
Gross 7.500kg
Total 5.000kg

High 10.005kg
Low 9.995kg
Below limit
    
```

**Printout Format #2**

```

Name VNFHRUDHFLQAUOKMCB
Pcode 12345678901234567A
Opr 3333
Mac 8888
MacGp 77

Date 2016-10-06
Time 14:25:24

Seq Gross Net
001 7.500 5.000 kg
002 7.500 5.000 kg
003 9.999 7.499 kg
004 9.999 7.499 kg
005 12.500 10.000 kg
006 5.000 2.500 kg
-----
006 Total 37.498 kg
    
```

**Printout Format #4**

```

Name VNFHRUDHFLQAUOKMCB
Pcode 12345678901234567A
Opr 3333
Mac 8888
MacGp 77

Date 2016-10-06

Seq Time Net
001 14:26:11 2.500 kg
002 14:26:14 5.000 kg
003 14:26:18 7.499 kg
004 14:26:25 2.500 kg
005 14:26:28 5.000 kg
006 14:26:31 7.499 kg
-----
006 Total 29.998 kg
    
```

**Printout Format #5**

## Connectivity

- 2 x Configurable Bi-Directional Serial Comports. Maximum Baud Rate = 256000
- 9 x Selectable Fixed plus 1 x User Programmable PC Output Protocols
- Support Bar Code Scanner for Customer & Product Code Entries
- Optional 4 Channel built-in Control Relay Board
- Optional Built-in LAN Module for Ethernet and Internet Communication

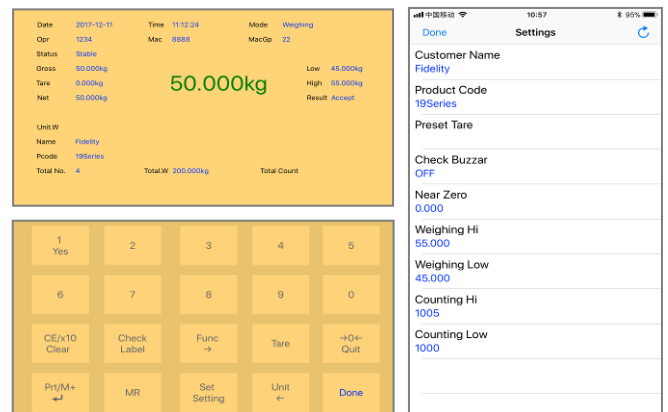


## Apps for Smart Phones & Devices

Free iOS App (i19) & Android App (a19) are available at App Store and Google Play respectively.

These Apps are so powerful that actually they turn your smart devices into a handheld terminal, remote display, remote data input center and controller of your FM product connected.

Both Apps support connection via Bluetooth and WIFI.



**Versatility, Functionality and Accuracy are always Built-in**

# 19i Multi-Function Indicator

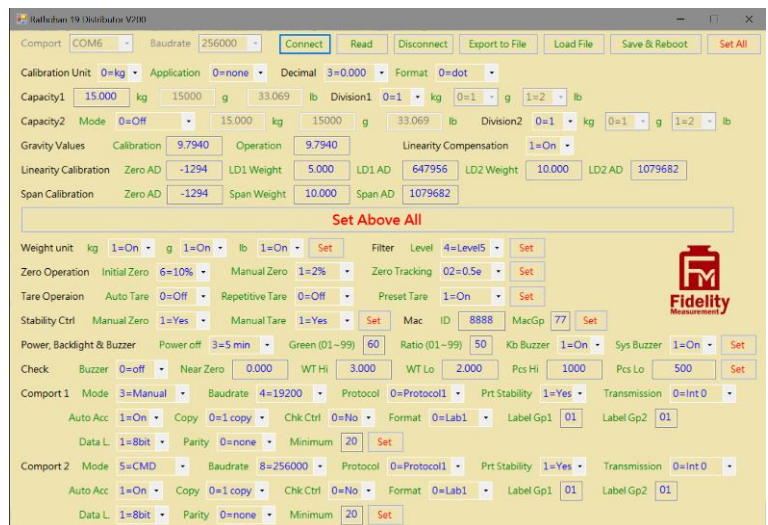
## End User PC Software

- Freeware Specially Created to Support End Users
- Real Time Operation Status Monitoring
- Operation Parameters Setting
- Real Time Process Monitoring
- Individual and Totalized Record Storage
- Database File Output



## Distributor only PC Software

- Freeware Specially Created to Support Distributors
- Extremely Useful for Heavy Capacity and Complex System Installation, Checking, Testing and Commissioning
- Real Time Important System Parameters Monitoring and Setting
- Export Current System Settings to External Backup File
- On Site or Remote System Recovery by External Backup File without Re-Calibration



## Options

- Stainless Steel Wall/Desk Mount Holder
- SP-POS58IV & SP-POS88IV Thermal Ticket Printer
- LP-50, TDP-225, TTP-225, TTP-247, TTP-345 Label Printer
- Serial Bar Code Scanner
- WM Wireless Communication Module
- RD-DOT Dot Matrix Remote Display
- Built-in 4-Channel Control Relay Board (Factory Installation)
- Bluetooth 4.0BLE Module/Kit
- Bluetooth 2.0 Module/Kit
- Built-in LAN Communication Module (Rechargeable Battery has to be Removed)



**Versatility, Functionality and Accuracy are always Built-in**

# 19i Multi-Function Indicator

## Specifications

OIML Approval Characteristics	<ul style="list-style-type: none"><li>• Approval Class &amp; Accuracy: - Class III 10,000e</li><li>• Minimum Input Voltage / e = 0.75<math>\mu</math>V</li></ul>
Capacity and Readability	Free Setting
Weighing Range	Single Range, Dual Range, Dual Interval
Weight Units	kg, g, lb
Display	6 x 45mm Huge Size Bold Type Wide Angle LCD Numeric Digits
Load Cell Connection	<ul style="list-style-type: none"><li>• Excitation Voltage = 5V DC</li><li>• Support both 4-wire &amp; 6-wire Load Cells</li><li>• Maximum Load Cell Connection: - Approved = 4 x 350<math>\Omega</math> or 8 x 700<math>\Omega</math> Load Cells Non-Approved = 10 x 350<math>\Omega</math> or 20 x 700<math>\Omega</math> Load Cells</li></ul>
A/D Converter & Internal Resolution	<ul style="list-style-type: none"><li>• 24 bit Low-Noise Delta to Sigma (<math>\Delta</math>-<math>\Sigma</math>)</li><li>• 4,000,000 Counts at 20 mV</li><li>• Minimum input per d = 0.05<math>\mu</math>V</li></ul>
AD Conversion Speed	15, 30, 60, 120 times/second Selectable
Max. Tare Range	-Max for Single Weighing Interval or -Max <sub>1</sub> (Subtractive Tare)
Calibration Methods	<ul style="list-style-type: none"><li>• 2 Span Points Calibration (Linearity Calibration), or</li><li>• 1 Span Point Calibration, or</li><li>• Numeric Calibration Through Keyboard</li></ul>
Power Source	<ul style="list-style-type: none"><li>• Built-in Rechargeable Battery = 6V, 4AH</li><li>• External Power Adaptor = DC 12V, 1A</li></ul>
Accessories	Pillar Mount Holder ( $\varnothing$ 35~38mm), Built-in Rechargeable Battery, Universal Power Adaptor, Dust Cover
Packing	Individually Packed <ul style="list-style-type: none"><li>• Dimensions = 36 x 32 x 16cm. Net / Gross = 2.35 / 2.85kg</li><li>• 6 Units in Shipping Carton</li><li>• Dimensions = 102 x 35 x 35cm. Net / Gross = 17.0/ 18.5kg</li></ul>
Operation Environment	-10 ~ 40°C. Non-condensed. R.H. $\leq$ 85%

*In the interest of improvement, specifications may change prior to notice*

